

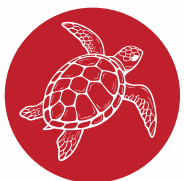


PROJECT ReCon

THE PROBLEM



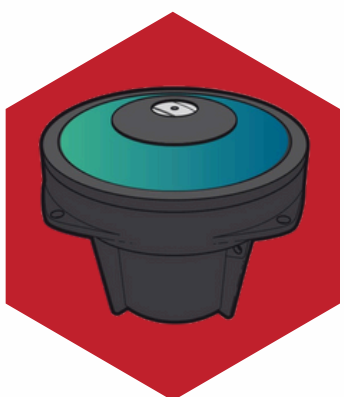
Ghost fishing gear is among the most damaging forms of ocean plastic to wildlife.



Ghost gear can drift from days to years, continuing to cause damage to marine ecosystems.



Some ghost nets are too large for immediate removal by the vessel that finds them.



GPS buoys are used by the international commercial fishing industry to track fishing gear, but they can drift away from fishing grounds and eventually get snagged on reefs or wash up on beaches as marine debris.

THE SOLUTION

Project ReCon: a world-first program that uses retrieved and repurposed satellite technology to track and retrieve deadly ghost gear.



Found a GPS Buoy?

IT HAS A SILVER AMDI TAG

This buoy has already been deployed to track ghost gear for Project ReCon.



NO AMDI TAG IS ATTACHED

It could be marine debris. Consider donating it to Project ReCon.

Take photos and record the date, location, and if it was found with other debris.

Host a GPS Buoy

Are you a marine operator? Do you find ghost gear while out on the water? Apply to host a Project ReCon buoy on your vessel!

We'll send you a buoy after a short training induction. If you find ghost gear you can't remove, attach the buoy and let us know so we can begin satellite tracking and coordinate removal. Once it's removed, we will send the buoy back to you to use again.



projectrecon.org

projectrecon@tangaroablue.org



Supported by:





PROJECT Recon

GPS BUOYS (MARINE DEBRIS)

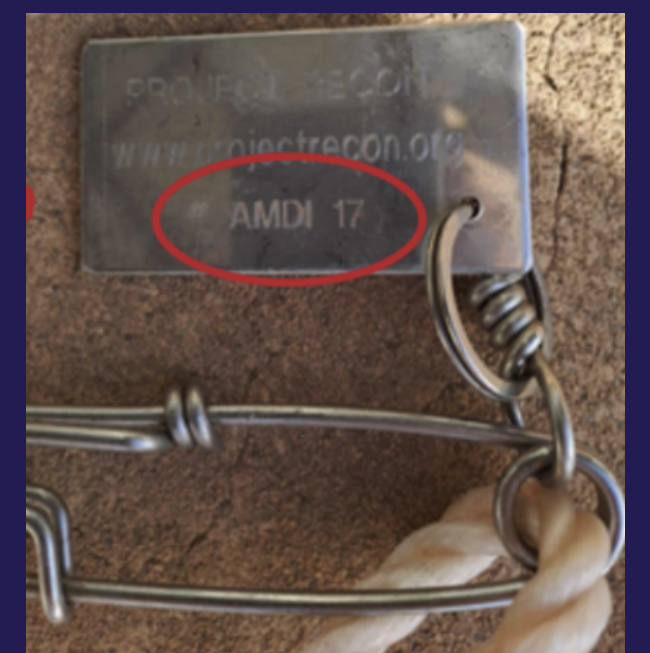
Multiple companies produce GPS buoys and there are several different types. All buoys should have ID numbers.



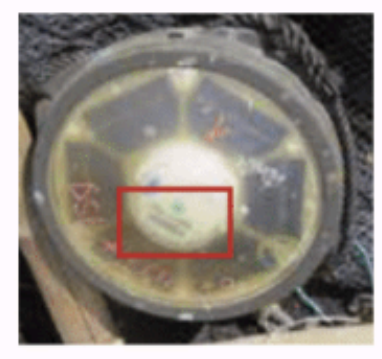
VS

PROJECT RECON BUOYS

Once a donated buoy is deemed eligible, it's prepared for re-deployment by project partners. An AMDI tag is attached, so if someone finds it, they know it's part of Project Recon. Shark clips are used to connect it to ghost gear.



Where is the Buoy ID Number?



ISL+123456



DSL+123456



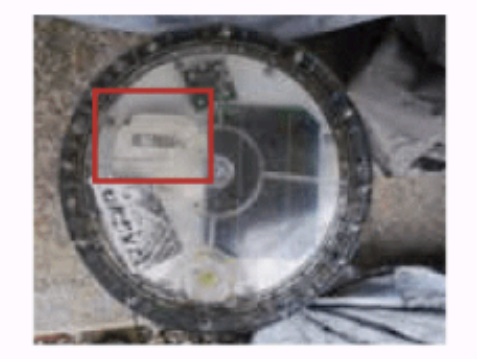
M3I123456



T7+123456789
or Ze0123456789



P1234NF



123456

FAQs

Find out more about becoming
part of Project ReCon



projectrecon.org

projectrecon@tangaroablue.org



Supported by:

