



Label Instructions

These labels were created to assist in the sorting process during/after a clean-up. They are based off the categories in the AMDI Identification manual, and simplified in order to stick onto sorting containers for easy separation of materials before counting.

Bags are brought to the sorting station and weighed. Clean-up participants then sort materials from their bags into their respective containers. From there items can be counted by the participants

Each site will vary in the amount and type of rubbish collected. If you know your site well and know, for example, that there are often large numbers of foreign materials or glass bottles, you may wish to create a label specifically for this item using the template on Page 3.

Tips

- Sorting containers should be lightweight, stack easily and be easy to clean after use.
- It is recommended that buckets for similar categories are placed next to one another - eg. plastic wrap for food and non-food / sanitary and paper. This helps people see the category division.
- Use laminated removable and waterproof signs for each bucket for re-use and to make cleaning easier
- Don't use a large container for the "Miscellaneous" category or people will not bother sorting properly



Instructions cont. Suggested Container Sizes

Below is a suggestion of what sized container should be used for each category. Note that this might be different depending on what is commonly found in certain areas

Large Containers

1. Plastic consumer items
2. Plastic wrap – food
3. Plastic wrap - non-food
4. Metal
5. Glass
6. Paper & cardboard



Medium Containers

1. Plastic drink bottles
2. Clothing and shoes
3. Fishing gear
4. Sanitary items
5. Hard plastic remnants
6. Rubber
7. Miscellaneous
8. Toys, ribbons, clips
9. Organics
10. Foam
11. Wood



Small Containers

1. Cigarette butts
2. Straws & sticks





Category Name: Sub Category Name

Category Item 1

Category Item 2

[Insert Photo]

[Insert Photo]

Category Item 3

Category Item 4

Category Item 5

[Insert Photo]

[Insert Photo]



Plastic Consumer: Cigarettes

Cigarette Butts

Cigarette Filters

Cigar Tips





Plastic Consumer:

Lighters/Stationary/Brushes/Cups/Toys

Cigarette Lighters



Pens/Stationary



Cups/Plates/Cutlery



Toothbrushes/Brushes



Toys/Ribbons/Clips





Plastic Consumer: Straws/Confection

Straws

Confection Sticks





Plastic Consumer: Miscellaneous

Childcare



Drug Paraphernalia



Fiberglass



Festive



First Aid



Gardening/Outdoor





Plastic Packaging: Lids/Tops

Lids/Tops

Caps

Flow Restrictors Pump

Spray Mechanisms

Corks

Champagne Stoppers





Plastic Packaging: Non-Food

Bleach/Cleaner Bottles

Personal Care

Containers (non-food)

Strapping Bands

Drink Package Rings

Sheeting/Signs

Packaging Accessories

Drums/Buckets





Plastic Packaging: Bags

Supermarket bags

Garbage bags

Dog poo

Ice bags

Bin liners





Plastic Packaging: Bottles

Water bottles



Juice bottles



Milk bottles



Soft drink





Plastic Packaging: Food

Food wrap

Snack packets

Film wrap

Confection wrappers

Take away containers

Food cups





Plastic Packaging: Wrap non-food

Bubble wrap

Product wrapping

Stickers/Labels





Plastic Fishing: Commercial/Recreational Fishing

Bait/Tackle Bags

Bait Containers/Lids

Lures/Floats/Buoys

Glow Sticks

Fishing Line/Net

Rope/Net Scraps

Crates/Trays





Plastic Remnants: Soft/Hard Remnants

Hard Plastic Remnants



Soft Plastic Remnants



Burnt Plastic Remnants

*NOTE: Remnant is anything

<50% of its original size





Plastic Items

Industrial/Commercial/Shipping/Vehicle

Blasting Items

Cable Ties/Fasteners

Carpet/Lino

Medical/ OHS

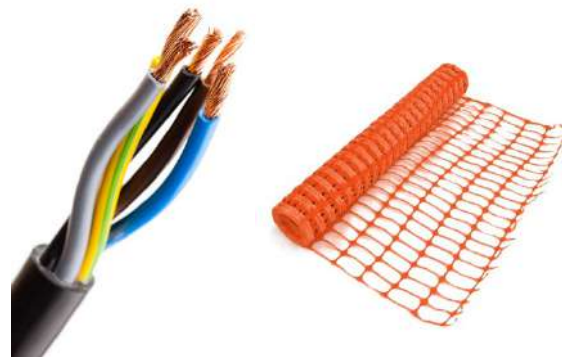
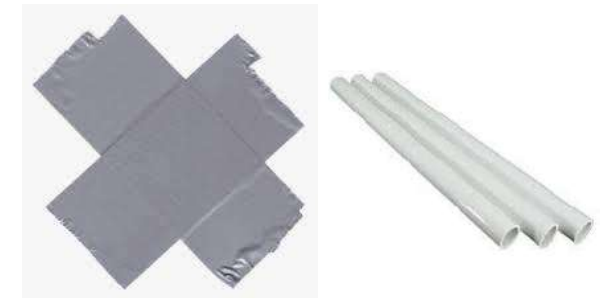
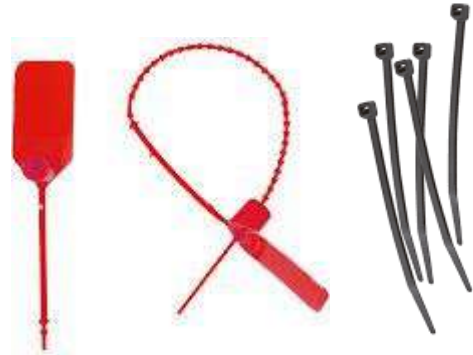
Marine Safety

Electrical

Tape

Irrigation/Pipe

Vehicle Parts





Plastic Items – Resin Pellets

Resin Pellets/Flakes





Foamed Plastic: Insulation/Packaging

Buoys



Cups/Food Packs/Trays



Insulation/Packaging



Sponge



Weather Balloon Parts



Other: Shoes & Cloth

Shoes

Leather/Fabric/Sandals

Binding/Thread/String

Cloth/Clothing/Hats

Canvas/Hessian

Natural Rope





Other: Sanitary Items

Tissues

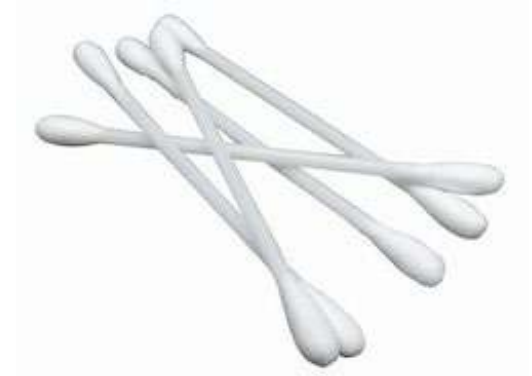
Nappies

Tampons/Applicators

Cotton Buds/Stems

Toilet Paper

Condoms





Other: Organic/Food Scraps

Food Scraps



Tea Bags



Organic Material

Animal manure, fish bait,
dog/human excrement





Other:

Electronics/Building/Boat/Chemicals/Personal/Pets/Soap/Oil

Appliances/Electronics

Batteries

Boat Parts/Wreckage

Building Materials

Paints/Chemicals

Wallets/Keys/Money

Pet Collars/Leashes

Wax/Soap

Oil/tar





Glass

Fluorescent Light

Tubes/Bulbs

Stubbies/Pre-mixed

Jars/Sauce

Broken Glass

Wine/Spirit/Energy

Bricks/Cement/Bitumen

Glassware/Ceramic





Metal Items

Aluminium/Aerosol Cans

Foil Wrap/Packets

Bottle Caps

Metal Fishing

Tins/Drums/Buckets

Metal Outdoor/Vehicle

Tools/Wire

Scraps/Remnants

Vehicle





Paper & Cardboard Items

Newspaper/Magazine



Packaging

Tetra pack



Drink Cartons

Parking Tickets

Labels

Paper/Envelopes





Rubber Items

Footwear/Thongs



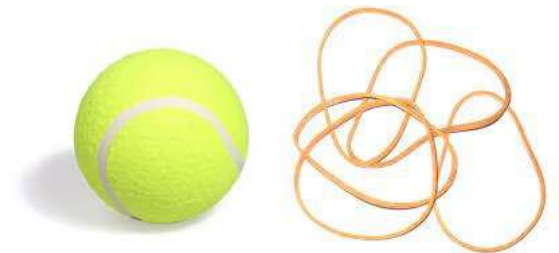
Remnants



Toys/Straps/Bands

Tyres/Hatch Seals

Sheeting





Wood Items

Brooms/Brushes



Timber/Pallets

Wooden

Sticks/Pencils/Matches



Wooden Fishing

Wooden Furniture

